

# Sign Up for NOTIFICATIONS by Map Section

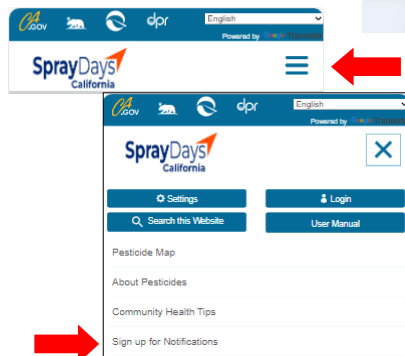
Follow these step-by-step instructions to sign-up to receive text messages or emails prior to the application of a restricted material pesticide near a specific address. These are instructions for signing up on a mobile device.



## VISIT WEBSITE:

Scan QR code or visit [www.spraydays.cdpr.ca.gov](http://www.spraydays.cdpr.ca.gov) to access SprayDays California.

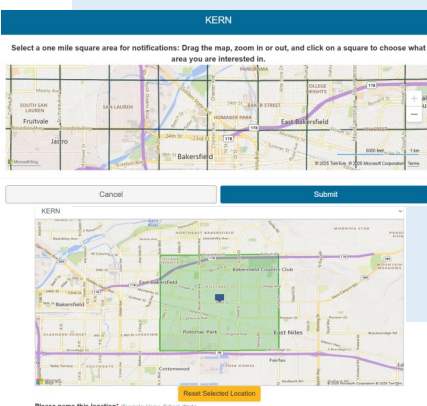
Use the pull-down menu at the top right of the screen to select your website language preference.



## SIGN UP:

Click on the three horizontal lines (a pull-down menu) at the top right of the screen.

On the pull-down menu, select the "Sign up for Notifications" option to visit the sign-up page.



## GO TO THE SIGN UP BY MAP SECTION PAGE:

On the Sign Up by Address page, under the address field, click on "[Try subscribing to a section in your county](#)" to go to the Sign Up by Map Section page. From there, choose your county, and a map will appear. Move the map to the area you're interested in, then click on the 1x1 mile square section you want to receive notifications for. Finally, give that section a name of your choice so you can easily identify it later, and complete filling in your sign up contact preferences.

## VERIFY:

Once you click "sign-up" you will need to verify your email address and/or phone number to start receiving notifications. You will receive a unique code sent to your email and a separate unique code sent to your cell phone. You will need to verify your email with the email code and your phone number with the cell phone code. If you do not receive a code, please select "Resend Confirmation Code" button to receive another one.

Email Confirmation Code

364079

Resend Email Confirmation Code

☒ Is this a trusted device? If you select this box, you will stay signed in for 7 days.

## CONFIRMATION:

Once you complete the sign-up you will receive a confirmation text and/or email message. This means you will now start receiving notifications when a pesticide application is planned near that address.

You can re-visit the user dashboard at any time to change details.